

BRITESTREAM SLIM90 FIBREGLASS POOL LIGHT



Rainbow Pool Products

PO Box 2388, Mansfield Qld 4122

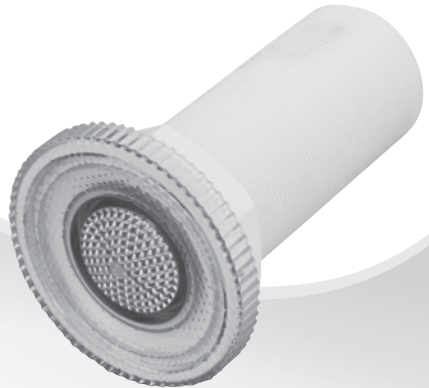
Telephone STD 61-7-3849 5385

Facsimile STD 61-7-3849 5384

Email: info@rainbowpoolproducts.com.au

Web: www.rainbowpoolproducts.com.au

Owner's Manual



WARNING

This equipment must be installed and serviced by a qualified technician. Improper installation can create electrical hazards which could result in property damage, serious injury or death. Improper installation will void the warranty.



Notice to Installer

This manual contains important information about the installation, operation and safe use of this product. Once the product has been installed **this manual must be given to the owner/operator of this equipment.**

Table of Contents

LED FIBREGLASS POOL/SPA LIGHT INTRODUCTION -----	01
LED FIBREGLASS POOL/SPA LIGHT SPECIFICATIONS -----	01
LED FIBREGLASS POOL/SPA LIGHT -----	02
COMPONENT IDENTIFICATION	
INSTALLATION -----	02
LED REPLACEMENT LIGHT INSTALLATION -----	03
DISCONNECTING THE LED LIGHT -----	03
CONNECTING REPLACEMENT LED LIGHT -----	04
TROUBLE SHOOTING -----	05

LED FIBREGLASS POOL/SPA LIGHT INTRODUCTION

Britestream Slim90 has been specifically designed for easy installation into fibreglass pools/spas. Features include the following:

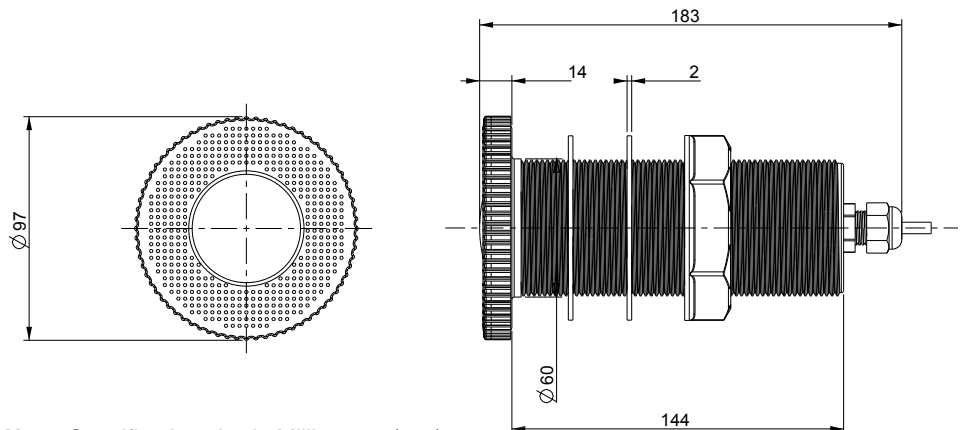
- Flush mounted with a minimal 14mm projection into pool.
- Super bright LED's.
- Life span of over 70,000 hours.
- Operates on only 10% of the electrical power of an equivalent halogen light.

Available in multicoloured RGB, blue and white models.

CAUTION

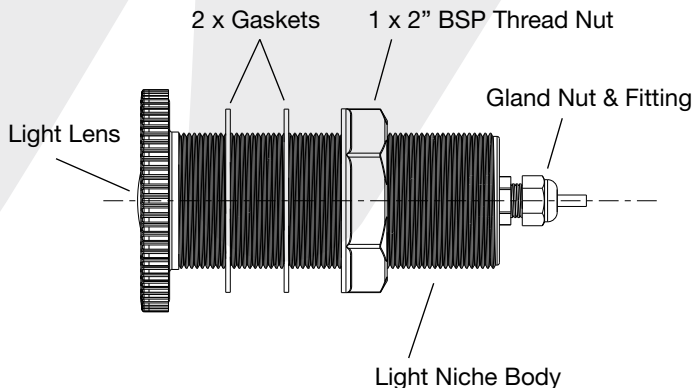
- *Ensure all pool/spa lights are installed by a suitably qualified persons (e.g. registered pool builder and/or qualified electrician), in accordance with AS/NZS 3000:2007 standards.*
- *This pool/spa light is supplied with a 20m power cable and should not be modified. Cutting an underwater section of power cable will void the warranty unless done so in conjunction with the underwater light replacement kit.*
- *The pool/spa light must be installed not more than 600mm below top of coping, to allow for removal from pool/spa for servicing.*
- *The recommended length of power cable that is stored within the light niche is 1m. This enables easy access without the need for entering the pool/spa water.*
- *Ensure the light is submerged in water before switching on, to avoid overheating.*
- *Surrounding area has to be clear and unencumbered to allow for adequate space to service the light.*
- *When switched off, the light should be left to cool for two minutes before switching on again.*

LED FIBREGLASS POOL/SPA LIGHT SPECIFICATIONS



Note: Specification size in Millimeters (mm).

LED FIBREGLASS POOL/SPA LIGHT COMPONENT IDENTIFICATION



INSTALLATION

- Locate the ideal position within the fibreglass pool/spa wall surface that best suits the lights installation ensuring this location is not more than 600mm below top of coping.
- Mark this position and using a 2.5" (63.5mm) holesaw drill a hole in the fibreglass pool/spa wall that will allow the light to be fitted.
- Remove the 2" BSP threaded nut, flange (outer) & outer gasket from the lights body and the 20m power cable.
- Thread the 20m power cable from the inside of the fibreglass pool/spa through to the outside of the pool/spa and insert the pool/spa light body into the 2.5" (63.5mm) hole.

Note: The inner gasket must be positioned between the pool/spa light lens and the fibreglass pool/spa surface.

- Thread the 20m power cable into the outer gasket, flange and 2" BSP nut and install on the exposed threaded light body. Tighten the 2" nut sufficiently to ensure the light assembly is properly secured to the fibreglass pool/spa wall and will not leak water.

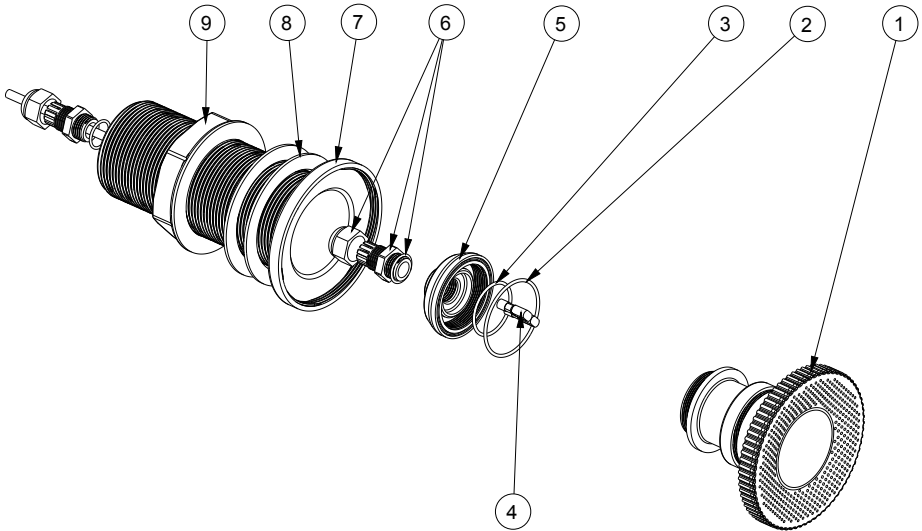
Note: Inspect and repair as necessary the fibreglass pool/spa walls to ensure the inner & outer gaskets are able to provide a water tight seal.

Note: It is recommended that the pool/spa light be fully immersed in water & the installation is inspected for leaks prior to back filling the pool/spa light/s installation area.

- The 20m power cable is now ready for connection to a Waterco single or multi connect pool light transformer.

Note: For further protection of the power cable the use conduit is an option.

LED REPLACEMENT LIGHT INSTALLATION



Disconnecting the LED light

- Disconnect power to light at the circuit breaker.
- Remove the light lens (1) by turning the light lens to the left unscrewing from the outer flange body (7). This will allow the lens assembly to be removed from the pool/spa water, but will still be connected to the body (7) via the 1m coiled power cord that is stored within the body (7).
- Remove the black power cable gland nut and Black gland (6) and slide back along power cable. Unscrew (turn to left) the gland mount cap (5) exposing the two power wires.

Note: These two wires are connected to the LED light assembly via two quick connect electrical spade connectors (4). These can be either disconnected by pulling apart or simply cutting the two power wires.

You have now successfully disconnected the existing LED light assembly and are ready to reconnect a new LED light assembly.

Connecting replacement LED light

The replacement LED lights are available as white, blue or multicolour RGB models and are supplied as a complete light assembly with the additional components as follows:

2 x Quick connect spade electrical connectors (4).

1 x gland mount cap (5) with black power cable gland nut and black gland (6).

2 x “o” rings (2 & 3).

1 x Bottle of natural lanoline.

- If not removed, inspect the two existing quick connect electrical connectors (4) on the two exposed wires of the power cable. These should be replaced if there is any suspicion of damage.
- If required remove the two quick connect electrical connectors (4) and replace with the 2 x replacements supplied with the LED replacement light.

Note: The exposed wires from the power cable conduit required length is approx 50mm.

Note: *The electrical components inspection and installation of the pool/spa lights should be carried out by a suitably qualified persons (e.g. registered pool builder and/or qualified electrician), in accordance with AS/NZS 3000:2007 standards.*

- Remove the gland mount cap (5) from the rear of the LED replacement light (unscrew to left). The black power cable gland nut and black gland (6) are fitted into the gland mount cap (5). Unscrew the black power cable gland nut (5) and place over the power cable and push the power cable through the black gland (6) and gland cap (5).

Note: Gland nut (6) should not be fully tightened. This will allow for adjustment of power cable.

- If necessary, ensure the 2 x exposed power wires to the replacement LED pool/spa light are approximately 50mm and then strip the blue and brown wires insulations approximately 10mm. Crimp the two quick connect spade connectors (4) to the stripped 10mm section of the blue and brown wires.
- Connect the two quick connect spade connectors (4) to connectors provided in the rear cup section of replacement LED light.
- Squeeze natural lanoline from supplied bottle into rear cap of replacement LED light completely covering the two quick connect spade connectors and fill to top.

Hint: Submerge the bottle of lanoline into a suitable size vessel and add temperate/warm water, this will help to soften the lanoline for easier flow and ensure the rear cap is completely full of lanoline for proper protection of the two quick connect spade connectors.

Slide gland mount cap (5) with black gland (6) to the correct position on the power cable conduit. Refit the two new “o” rings (2 & 3) to the rear of the replacement LED light and internally of the gland mount cap (5).

Note: Ensure that both “o” rings are properly fitted into the gland mount cap (5) “o” ring seats/grooves.

- Secure gland mount cap (5) to the replacement LED light by turning to the right and tighten to ensure there is a water tight seal, and once again check “o” ring is proper fitting.
- Refit black power cable gland nut (6) and tighten to ensure proper sealing and locking the gland mount cap (5) to correct position.

The replacement LED light is now ready to be refitted to the outer flange body (7) already secured into the fibreglass pool/spa wall. Ensure to carefully push the 1m coiled power cable into the outer flange niche body (7) and refit the new replacement LED light & lens assembly (1) and secure to the light Niche housing (7) by turn till tight to the right.

Congratulations, reconnect power to your light at the circuit breaker and your new Waterco replacement LED light is ready for use.

TROUBLE SHOOTING

FAULT	POSSIBLE CAUSE	REMEDY
Light not operating	<ul style="list-style-type: none"> - Fuse in transformer blown. - No power to transformer. - Fault in electrical wiring. 	<ul style="list-style-type: none"> - Replace fuse. - Check main fuses in switchboard. - Electrician to check.
Light very dim and pulsating	<ul style="list-style-type: none"> - Mismatch of lamp and transformer ratings. - Damaged wiring/ connectors. 	<ul style="list-style-type: none"> - Fit correctly rated transformer*. - Replace wiring/ connectors.
Main house fuse blows when light switched on	<ul style="list-style-type: none"> - Faulty transformer - Damaged cable - Incorrect electrical installation. 	<ul style="list-style-type: none"> - Call electrician to check installation.



Rainbow Pool Products

PO Box 2388, Mansfield Qld 4122

Telephone STD 61-7-3849 5385

Facsimile STD 61-7-3849 5384

Email: info@rainbowpoolproducts.com.au

Web: www.rainbowpoolproducts.com.au